

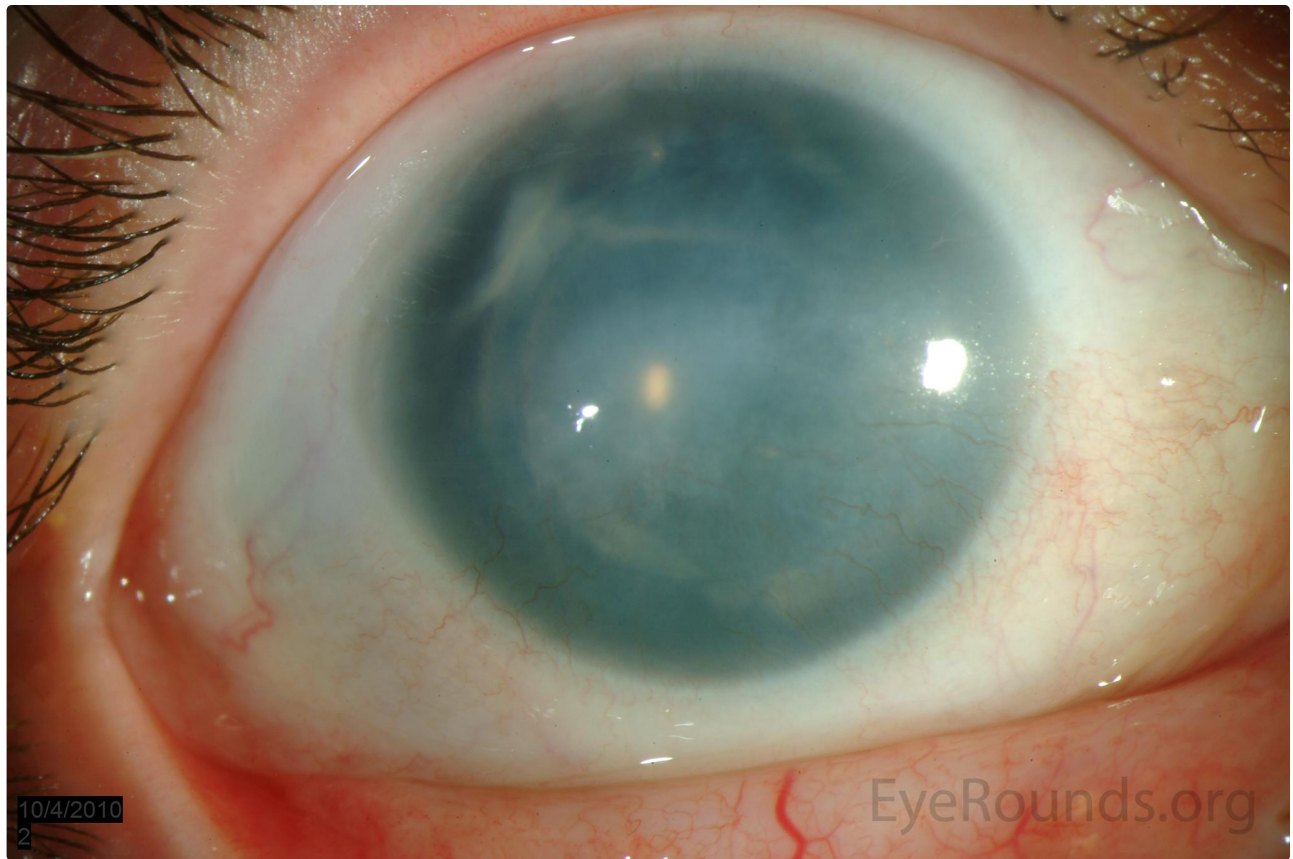
## Congenital aniridia

**Category(ies):** Cornea, Inherited Eye Disease

**Contributor:** [Jesse Vislisel, MD](#)

**Photographers:** Cindy Montague, CRA

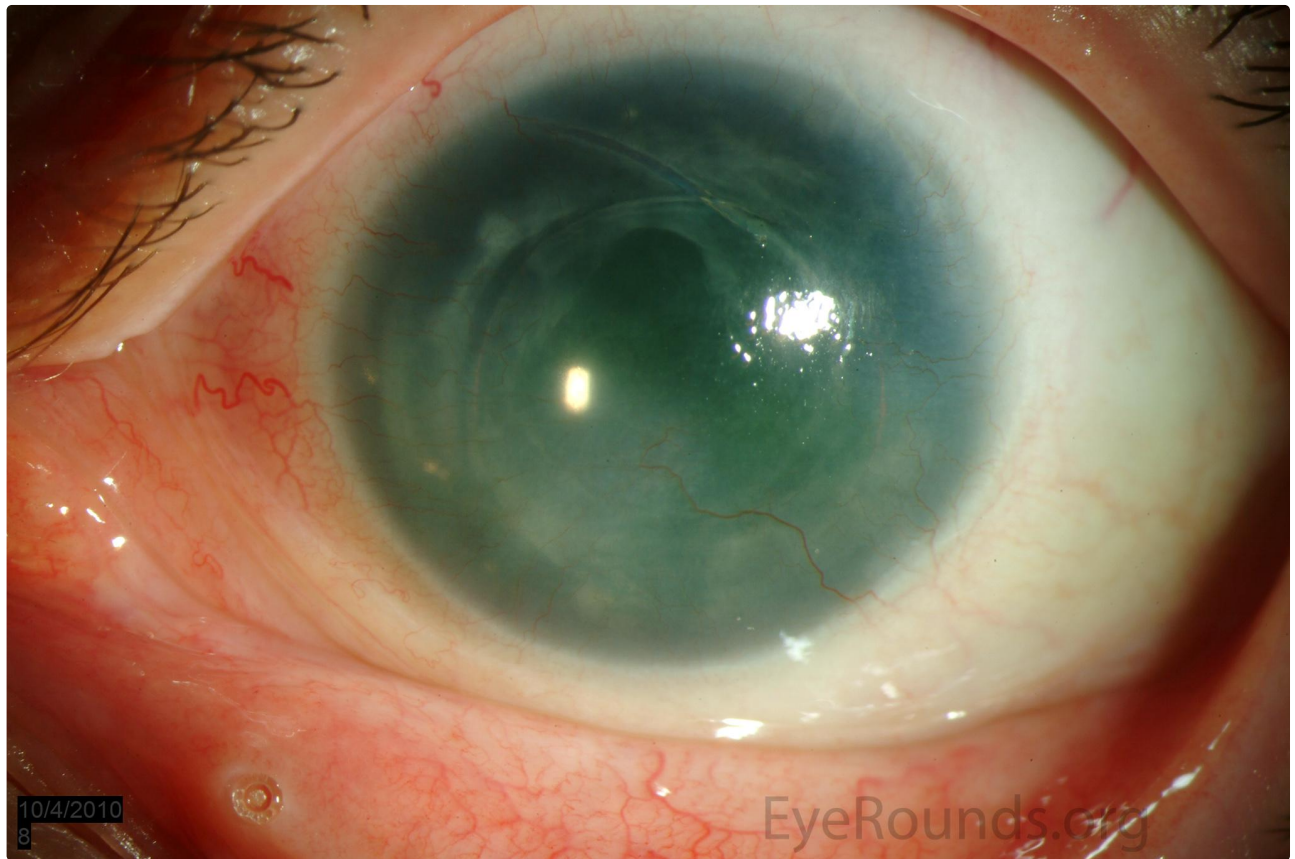
Congenital aniridia is a hereditary disease most commonly with autosomal dominant inheritance. These slit lamp photographs show iris hypoplasia and corneal scarring in a patient with congenital aniridia. This patient underwent cataract surgery and has 3-piece posterior chamber intraocular lenses in both eyes which are easily visible with retroillumination.



This patient with congenital aniridia has 3-piece posterior chamber intraocular lenses in both eyes

[Enlarge](#)

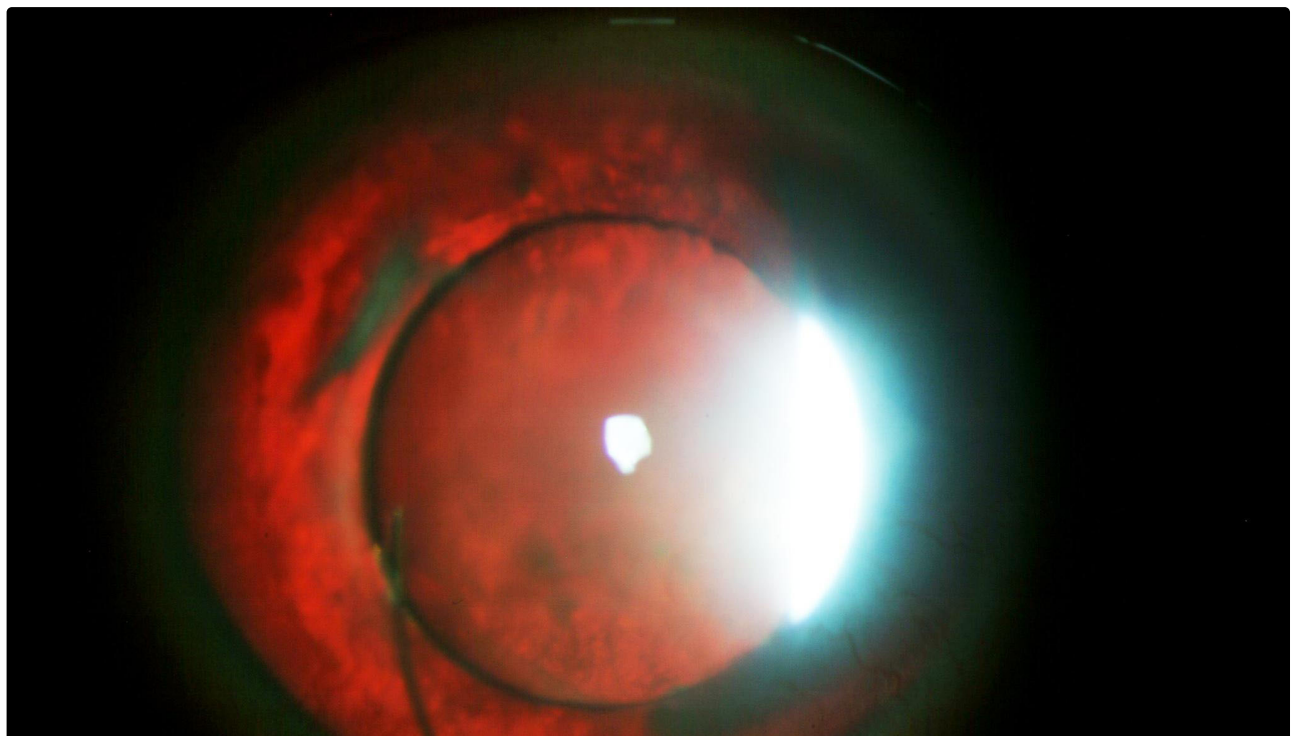
[Download](#)



This patient with congenital aniridia has 3-piece posterior chamber intraocular lenses in both eyes

[Enlarge](#)

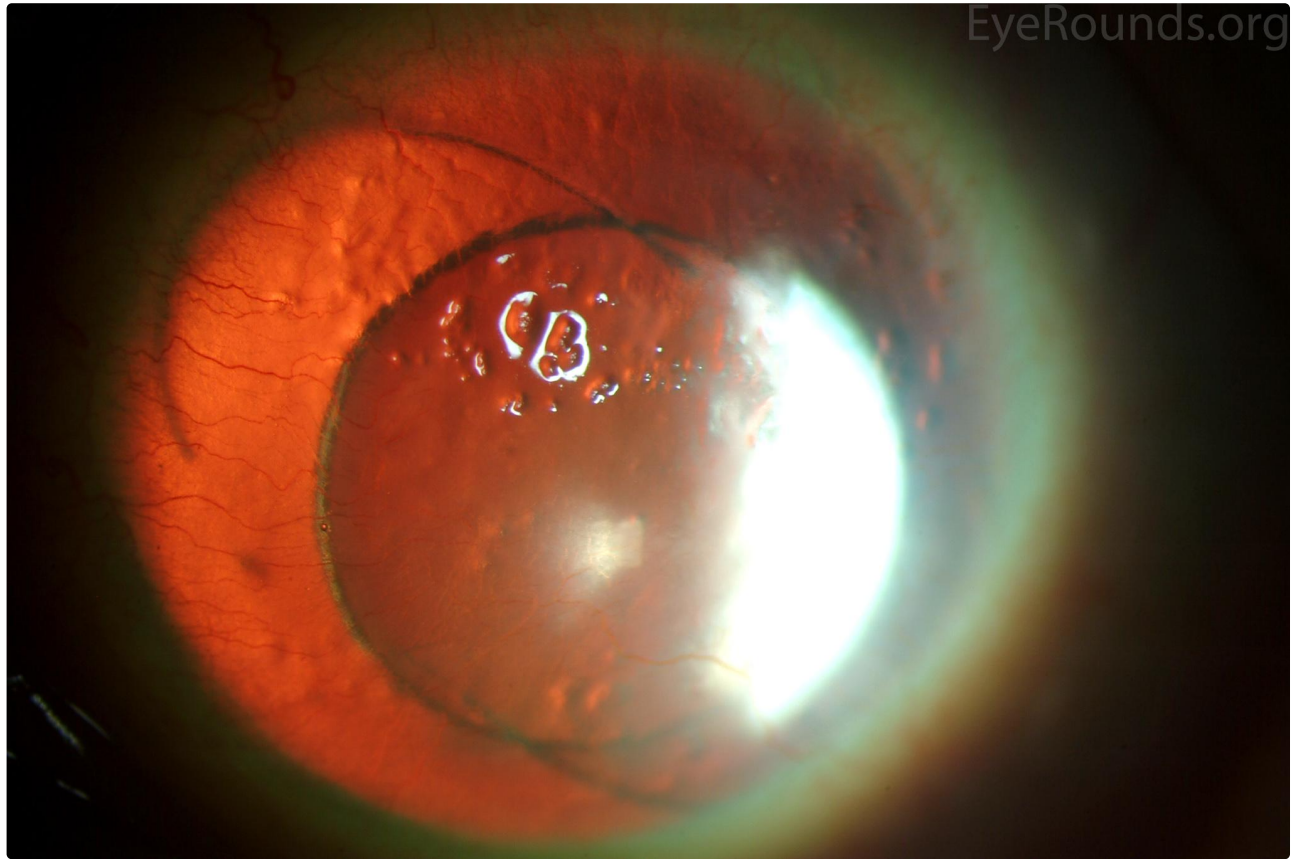
[Download](#)





They are seen on retroillumination

[Enlarge](#) [Download](#)



They are seen on retroillumination

[Enlarge](#) [Download](#)

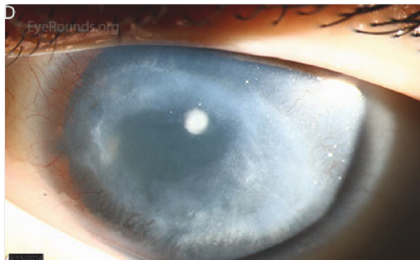
### Image Permissions:



Ophthalmic Atlas Images by [EyeRounds.org](#), [The University of Iowa](#) are licensed under a [Creative Commons Attribution-NonCommercial-NoDerivs 3.0 Unported License](#).



### Related Articles



## Address

University of Iowa  
Roy J. and Lucille A. Carver College  
of Medicine  
Department of Ophthalmology and  
Visual Sciences  
200 Hawkins Drive  
Iowa City, IA 52242

[Support Us](#)

## Legal

Copyright © 2019 The University of  
Iowa. All Rights Reserved  
[Report an issue with this page](#)  
[Web Privacy Policy](#) |  
[Nondiscrimination Statement](#)

## Related Links

[Cataract Surgery for Greenhorns](#)  
[EyeTransillumination](#)  
[Gonioscopy.org](#)  
[Iowa Glaucoma Curriculum](#)  
[Iowa Wet Lab](#)  
[Patient Information](#)  
[Stone Rounds](#)  
[The Best Hits Bookshelf](#)

## EyeRounds Social Media

Follow



Receive notification of new cases,  
[sign up here](#)  
[Contact Us](#)  
[Submit a Suggestion](#)